

EMERGENCY RESPONSE ROBOTIC SYSTEM

CRISIS
MANAGEMENT
SOLUTION

MVF-5



TUSK

DON'T SEND A MAN
TO DO A MACHINE'S JOB

MVF-5 at glance

CRISIS MANAGEMENT SOLUTION

The MVF-5 is multi-mission, heavy-duty, robotic system for emergency response. It serves first responders to execute tasks in the harshest, most demanding and life threatening conditions. The primary objective of the MVF-5 is fire extinguishing in extreme conditions, in inaccessible areas of high risk, clear roadblocks and debris without direct threat to operators.



FIRE EXTINGUISHING CAPABILITIES

- Onboard firefighting system (water & foam tank, pump, monitor)

DAY/NIGHT OPERATION

- Low visibility camera
- Thermal camera

BODY PROTECTION

- Hardox 450

SELF RECOVERY & PULLING

- Winch

OFF/ON ROAD MOBILITY

- Wide metal tracks
- Rubber pads (optional for operation on hard surfaces)

AIR, SEA AND ROAD TRANSPORTABLE

- Lifting points
- Tie down points

SITUATIONAL AWARENESS

- IR video camera
- 360° video coverage

EXTENDED & FLEXIBLE REACH

- 3 joints
- 360° rotation

SELF-COOLING CAPABILITY

- Sprinkler system

DETECTION CAPABILITY

- User defined sensor set

MULTI-MISSION CAPABILITY

- Rotational gripper
- Cutting capability
- Breaching tool

GUARANTEED SAFETY IN EXTREME CONDITIONS

The MVF-5 robust design in combination with powerful engine and tracked chassis with multifunctional tools enable effective obstacle removal on path of intervention. Fitted with reliable data communication system and tele operation, the MVF-5 allows the operator to remain outside of danger zone during operation of the system.

Multifunctionality

APPLICATIONS

- Survey and Reconnaissance
- Obstacle Removal on Path of Intervention
- Firefighting
- Rescue Support Operations
- Hazmat/CBRN
- Logistic Support

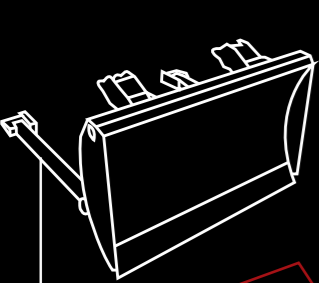


Consequence Management of Critical Infrastructure

- Munition Sites
- Shooting Ranges
- Flammable Materials Warehouses
- Oil Refineries & Terminals
- Petrochemical Plants
- Chemical Plants and Warehouses
- Nuclear Power Plants

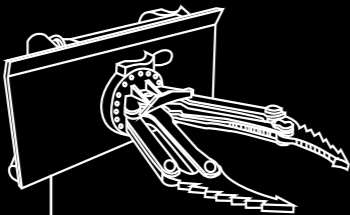
Emergency response robotic system

Multiple functionalities for various interventions



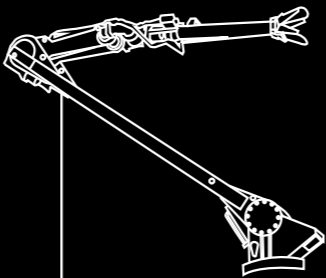
Dozer Blade

Purpose: Earth & other loose material moving
Pushing capacity: Up to 10 t
Width: 2280 mm



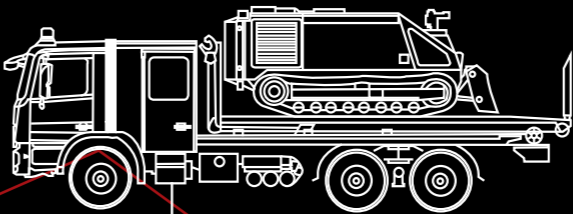
Rotational Gripper

Purpose: Breaching, removal of obstacles, mitigation
Lifting capacity: 2000 kg
Pushing capacity: 10000 kg



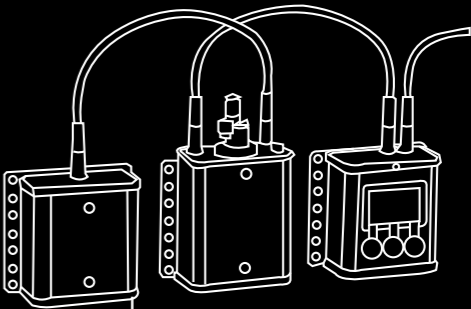
Segmented Hydraulic Arm

Purpose: Remote fire extinguishing, monitoring
Movement: 3 joints, 360° continuous rotation
Characteristics: water & foam range up to 55 m, other water monitor (optional)



Command & Control

Purpose: Safe environment operation, additional resources, logistics
Transport: On a logistic vehicle (trailer optional)
Truck brand: Upon request



Sensors

Purpose: Detection and measuring of Toxic industrial chemicals, oxygen level, explosive gas and temperature
Other sensors: Optional

After sales

LOGISTICS, MAINTENANCE AND SUPPORT

Due to its size, the MVF-5 can be easily moved by different means of transportation.

Air Delivery by any large commercial freighter (e.g. B-777, 747) and military cargo planes (e.g. A-340, C-130, C-5, IL-76)

Water Ideal for delivery by sea is a standard 20' GP container

Land On any standard commercial trailer, commercial truck or low-bed truck with sufficient loading capacity in a few minutes.



To facilitate end users effective and uninterrupted use of MVF-5, DOK-ING provides the following services.

Training Specialized comprehensive training course for operators, mechanics and electricians delivered by highly experienced trainers in several languages and according to training plan and program

Mentoring / Supervision Ability to provide service/personnel to facilitate day-to-day operation of the MVF-5

Maintenance Supply of spare parts adequate stock and availability of rapidly responsive technical team worldwide



DOK-ING Ltd. general info

DOK-ING is an international market leader with its headquarter in Croatia, EU. We design, produce and deliver high quality and combat proven robotic systems for special purposes around the world. Experience gathered through more than 30 years of operational feedback is constantly being built into our products. We are not only the producer, but also the user of our own systems.

DOK-ING also provides training by highly skilled

professionals who are transferring their field knowledge through systematic and well planned training sessions.

Great knowledge, experience, innovative and purpose-made systems and technologies enable us to be customer-oriented company with flexible approach to end user requirements in order to help solving real environmental problems.

DOK-ING BUSINESS

PRODUCTS

- MILITARY ENGINEERING
- EMERGENCY RESPONSE
- UNDERGROUND MINING
- COUNTER TERRORISM

DEVELOPMENT

- NEW PRODUCTS
- EXISTING PRODUCTS UPGRADE AND OPTIMISATION

SERVICES

MINE ACTION SERVICES

- MECHANICAL DEMINING AND GROUND PREPARATION
- BAC
- EOD
- MECHANICAL TECHNICAL SURVEY AND CLEARANCE

AFTER SALES SUPPORT

- SPARE PARTS DISTRIBUTION
- MAINTENANCE
- SUPERVISION
- TRAINING
- LIFE CYCLE EXTENSION

LOCAL START – GLOBAL REACH NO. OF DELIVERED SYSTEMS

- NORTH AMERICA – 145
- SOUTH AMERICA – 10
- EUROPE – 65
- ASIA – 72
- AFRICA – 59
- AUSTRALIA – 9

DOK-ING MANUFACTURES, DEVELOPS
AND PROVIDES ROBOTIC SOLUTIONS
FOR SPECIAL PURPOSES IN THE GLOBAL
MARKET.

PRESENT IN MORE THAN **40** COUNTRIES
WORLDWIDE



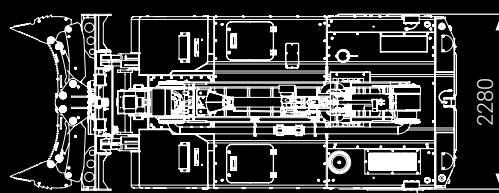
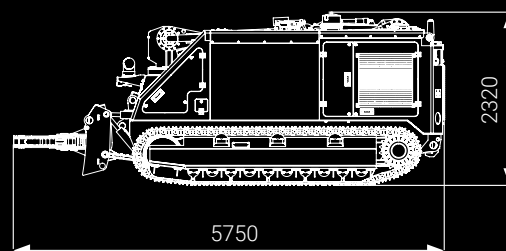
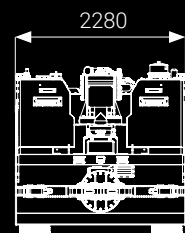
MVF-5 TECHNICAL CHARACTERISTICS

Dimensional data*

Length	5750 mm
Width total (transport/overall)	2280mm/2315 mm
Height (overall)	2320 mm
Weight (overall)	16000 kg
Engine type	Perkins / Caterpillar
Engine power	186 kW 250 HP / 205 kW 275 HP
Engine torque	1050 Nm @ 1400 rpm / 1257 Nm @ 1400 rpm
Fuel consumption	25 l/h
Water tank capacity	2500 l
Foam tank capacity	500 l
Ground pressure	0,84 kg/cm ²
Operational speed	11 km/h
Longitudinal gradeability**	30°
Side slope capability**	20°
Fording depth	80 cm

*Standard configuration with gripper tool

** Depending on the ground



DOK-ING Ltd.
Slavonska avenija 22 G, 10000 Zagreb, Croatia
T +385 1 2481 300 / F +385 1 2481 303
info@dok-ing.com / www.dok-ing.com

R&TTE Directive 1999/5/EC, EMC Directive 2004/108/EC,
Low Voltage Directive 2006/95/EC, Machinery Directive 2006/42/EC
Other references: IMAS 09.50, CWA 15044:2009, CWA 15832:2008

All technical characteristics contained in this brochure are provided for informational purposes only, and DOK-ING Ltd. reserves the right to make changes without notice.