

ELECTRIC NARROW

PRODUCTIVE,
SAFE AND
ZERO
EMISSIONS

REEF ROBOTIC DOZER

NRE
Dozer

DON'T SEND A MAN
TO DO A MACHINE'S JOB

NRE Dozer at glance

PRODUCTIVE, SAFE AND ZERO EMISSIONS

The NRE Dozer is a very low profile remote-controlled machine with the aim to increase safety and productivity in material handling operations. The NRE Dozer is designed to work in stoping widths from 0.9 m, and has the ability to work in reef inclinations of up to 25°. Main purpose of NRE Dozer is to push ore from a blasted panel into the advanced strike drive (ASD). The NRE Dozer can also be used to perform cleaning backlog ore/sweepings, roadways cleaning and panel entrances (holing) cleaning.



DOK-ING NRE DOZER / 03



- REMOTE CONTROL CAPABILITY**
- Allows operator to remain at a safe distance while operating machine

- DIFFERENT TASKS**
- Exchangeable front tool

- INTEGRATED FAST CHARGER**
- Can be charged by mine standard grid & plugs

- ELECTRIC DRIVE**
- No gas emission reduces ventilation requirements
 - Low noise

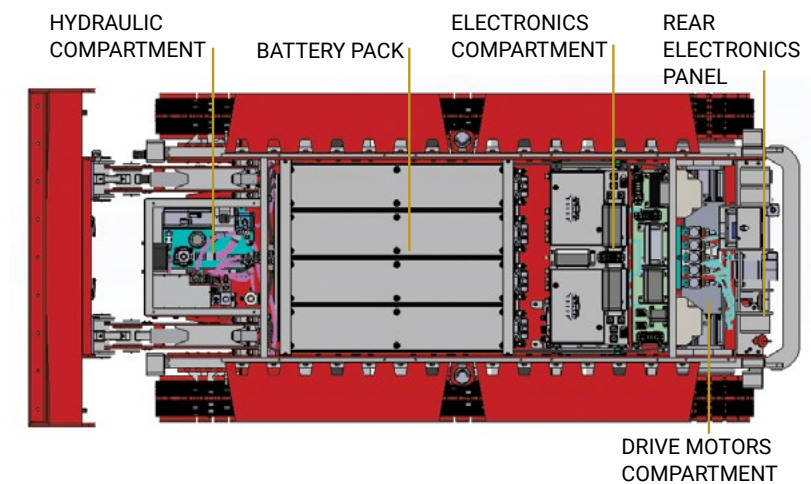
- HEIGHT 652 mm**
- Ultra low profile dimensions allows access to confined areas

- HIGH MOBILITY**
- Small turning radius
 - Low profile tracks

- EASY MAINTENANCE ACCESS**
- Divided compartments (hydraulic, power, control)

- STANDARDISATION**
- Common prime mover for blade/bucket/sweeper
 - Standardisation of internal electronic components (stock levels reduced)

- QUICK TOOL ATTACHMENT**
- Universal coupling



BATTERY POWER DRIVEN AND OPERATED BY REMOTE CONTROL

Its robust design, small dimensions, small turning radius, low noise level and nil gaseous emission make this machine the most suitable tool for underground applications.

Multifunctionality

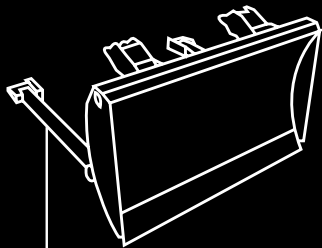
APPLICATIONS

- Narrow Reef Mining
- Long Hole Drill Mining Set Up
- Sweeping and Vamping
- Cleaning in Dangerous and Un-supported Areas

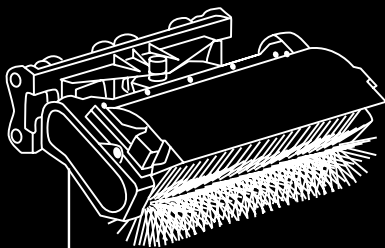


- Cleaning under Conveyor Belts
- Cleaning in Smelters Areas
- Accelerated Bridge Construction
- Support in Different Construction Applications

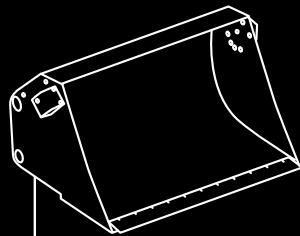
Ultra low profile versatile platform
Prime mover and various exchangeable tools



Blade
Purpose: Pushing, rough cleaning
Working capacity: 50 -120 t/hr



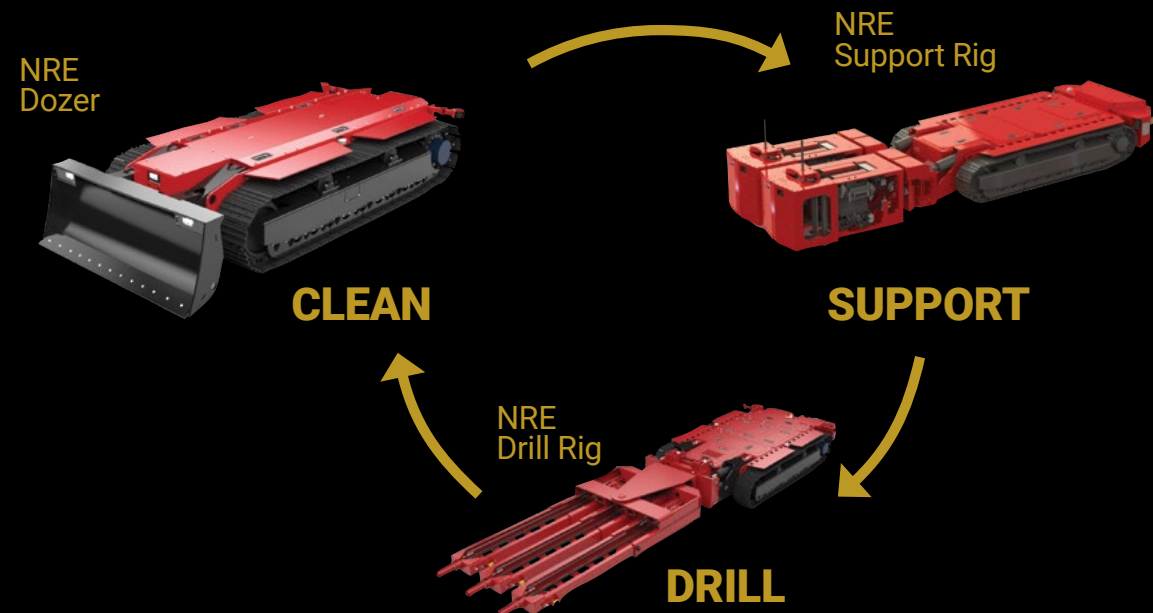
Sweeper
Purpose: Fine cleaning, sweeping
Coverage: 300 m² / h



Bucket
Purpose: Material loading/unloading and transportation
Capacity: 0,65 m³

NARROW REEF MINING MECHANISATION

The NRE Dozer is a key part of the new powerful electrical NRE suite of equipment which operates in stoping widths between 0.9m to 1.7m and yields improved operational performance in order to mechanise the majority of the mining activities in the cycle.



AFTER SALES

To facilitate end users effective and uninterrupted use of NRE Dozer, DOK-ING provides the following services.

- Training**: Specialized training course for operators and technicians
- Mentoring / Supervision**: Ability to provide service/personnel to facilitate day-to-day operation of NRE Dozer
- Maintenance**: Supply of spare parts adequate stock and availability of rapidly responsive technical team worldwide



DOK-ING Ltd. general info

DOK-ING is an international market leader in humanitarian demining industry with its headquarters in Croatia, EU. We design, produce and deliver high quality and combat proven robotic systems for special purposes around the world. Experience gathered through more than 30 years of operational feedback is constantly being built into our products. We are not only the original equipment manufacturer (OEM), but also the user of our own systems.

DOK-ING also provides training by highly skilled professionals who are transferring their field knowledge through systematic and well planned training sessions.

Great knowledge, experience, innovative and purpose-made systems and technologies enable us to be customer-oriented company with flexible approach to end user requirements in order to help solving real operational and environmental problems. With a branch office and workshop in Johannesburg (South Africa), DOK-ING provides a premium service to regional customers.

DOK-ING BUSINESS

PRODUCTS

- MILITARY ENGINEERING
- EMERGENCY RESPONSE
- UNDERGROUND MINING
- COUNTER TERRORISM

SERVICES

DEVELOPMENT

- NEW PRODUCTS
- EXISTING PRODUCTS UPGRADE AND OPTIMISATION

MINE ACTION SERVICES

- MECHANICAL DEMINING AND GROUND PREPARATION
- BATTLE AREA CLEARANCE
- EXPLOSIVE ORDNANCE DISPOSAL
- MECHANICAL TECHNICAL SURVEY AND CLEARANCE

AFTER SALES SUPPORT

- SPARE PARTS DISTRIBUTION
- MAINTENANCE
- SUPERVISION
- TRAINING
- LIFE CYCLE EXTENSION

LOCAL START – GLOBAL REACH NO. OF DELIVERED SYSTEMS

- NORTH AMERICA – 145
- SOUTH AMERICA – 10
- EUROPE – 65
- ASIA – 72
- AFRICA – 59
- AUSTRALIA – 9

DOK-ING MANUFACTURES, DEVELOPS AND PROVIDES ROBOTIC SOLUTIONS FOR SPECIAL PURPOSES IN THE GLOBAL MARKET.

PRESENT IN MORE THAN **40** COUNTRIES WORLDWIDE



NRE DOZER TECHNICAL CHARACTERISTICS

DIMENSIONS

Prime Mover	3460 x 1558 x 652 mm
Prime Mover with Dozer blade	3650 x 1600 x 652 mm
Prime Mover with Sweeper	4660 x 1620 x 652 mm

BLADE

Clearance	130 mm
-----------	--------

WEIGHT

Prime Mover	4115 kg
-------------	---------

POWER SYSTEM

Battery Type	LiFePO4
Nominal Voltage	308 V DC
Battery Capacity	Up to 8 h

ON BOARD FAST CHARGER

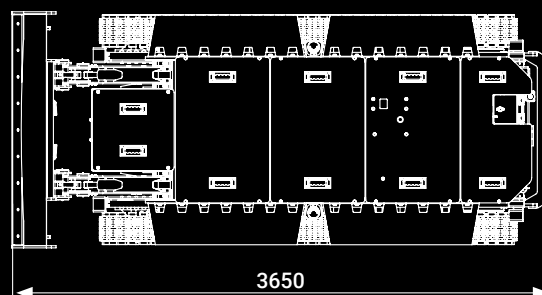
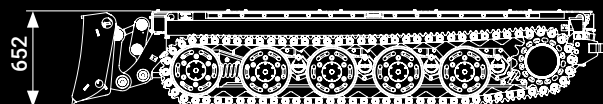
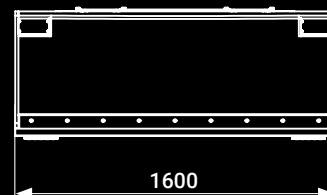
Charging time	3 hours
Charging source (voltage)	380 – 550 VAC 3ph

BRAKES

Braking System	Spring Applied Hydraulic Release
----------------	----------------------------------

OPERATING CAPACITY

Sweeper cleaning rate in m2	40 m2/h
Dozer Cleaning rate	50 -120 t per hour



EUROPE

DOK-ING Ltd.

Slavonska avenija 22 G, 10000 Zagreb, Croatia
T +385 1 2481 300 / F +385 1 2481 303
info@dok-ing.com / www.dok-ing.com

SOUTH AFRICA

DOK-ING Africa (Pty) Ltd.

237 Joseph Street, CNR Nywerheid, Gemiston 1401,
Johannesburg, SA
T + 27 11 822 4684 / F + 27 11 4540396
tom@doking.co.za

R&TTE Directive 1999/5/EC, EMC Directive
2004/108/EC, Low Voltage Directive 2006/95/
EC, Machinery Directive 2006/42/EC
Other references: IMAS 09.50, CWA
15044:2009, CWA 15832:2008