

ELECTRIC NARROW REEF DRILL RIG

EFFICIENT
AND SAFE
DRILLING
PERFORMANCE

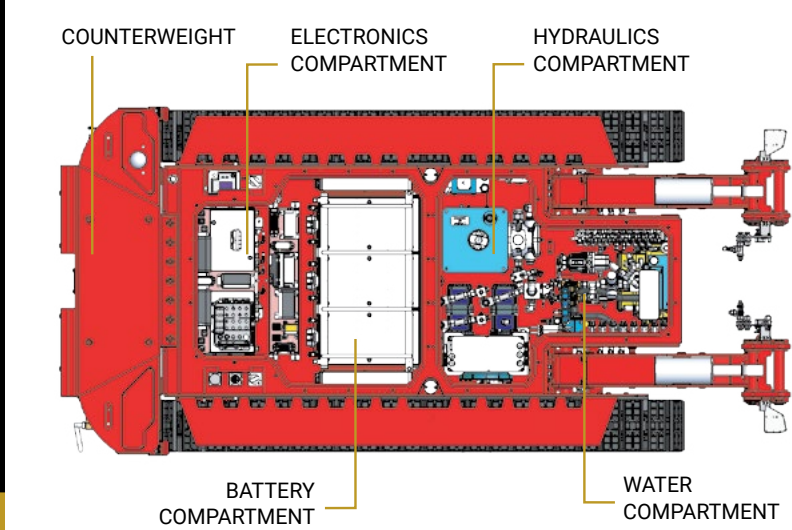
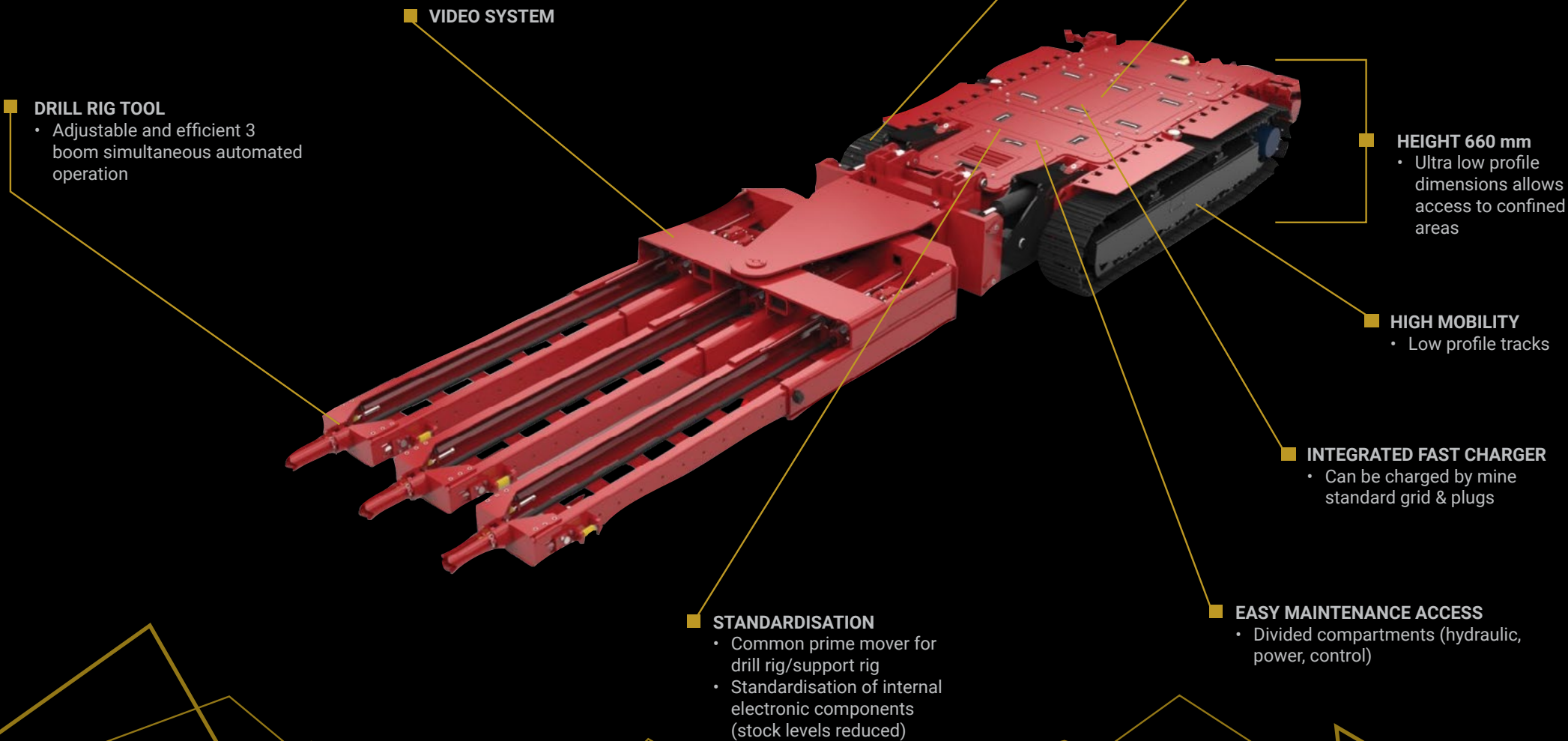
NRE
Drill Rig

DON'T SEND A MAN
TO DO A MACHINE'S JOB

NRE Drill Rig at glance

EFFICIENT AND SAFE DRILLING PERFORMANCE

The purpose of NRE Drill Rig is to drill the panels in order to prepare them for blasting. The operator can perform all of the functions from a safe operating distance. Its robust design, small dimensions, low noise level, and nil gaseous emission make this machine the most suitable tool for underground applications. The NRE Drill Rig is battery power driven and operated by remote control.



BATTERY POWER DRIVEN AND OPERATED BY REMOTE CONTROL

The NRE Drill Rig is designed to work in stoping widths from 0.9 to 1.7m, and can work in reef inclinations of up to 22°. The NRE Drill Rig has a 3-drill drifter configuration, allowing 3 face holes to be drilled simultaneously. Its lightweight, stand-alone remote control allows the operator to remain at a safe operating distance during the production process.

Efficiency

SAFETY AND ADAPTABILITY

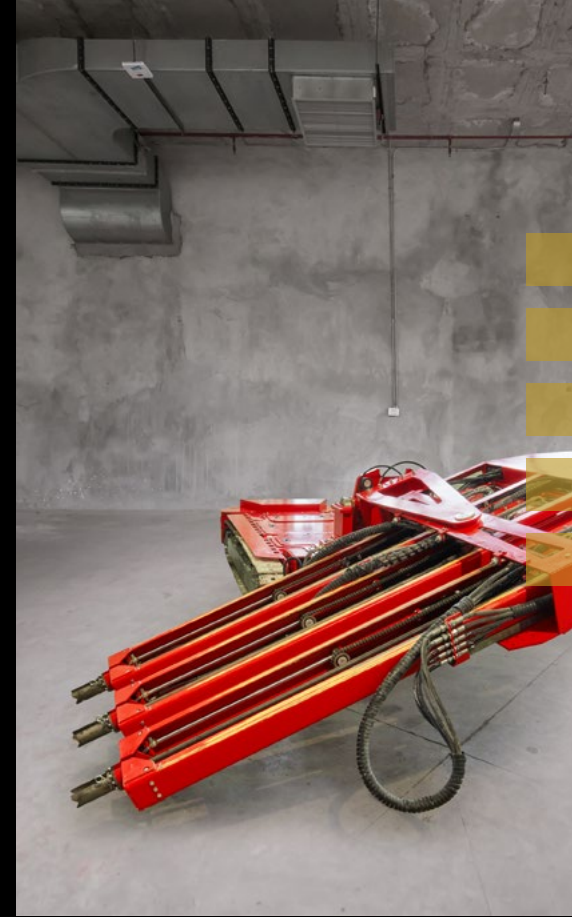
Single button automated
drilling cycle

3 x boom
(drills simultaneously)

Advance rate – 2 m/blast

Drill steel – length 2.3 m,
max diameter hole 41 mm

Drilling speed - 1 m/min



Adjustable tool kinematics

Electro hydraulic drifters

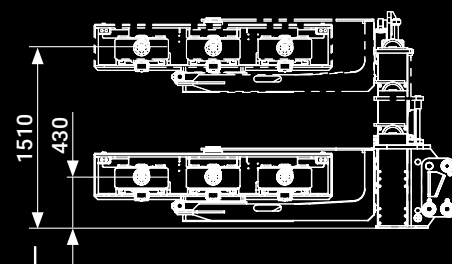
Laser positioning system

Adjustable burden spacing

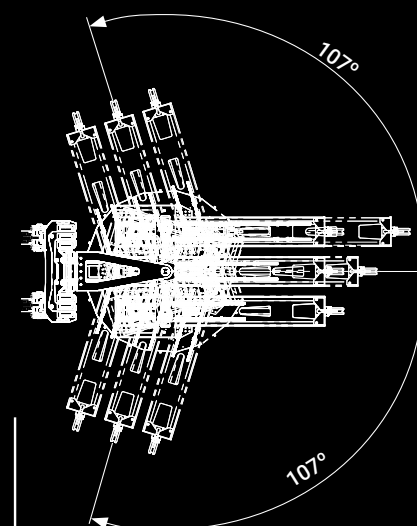
Adjustable drilling angles

Narrow reef prime mover platform

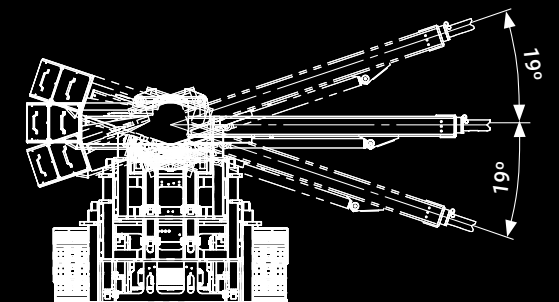
Interchangeable support rig and drill rig
tool attachments



Adjustable tool height:
430mm - 1510mm



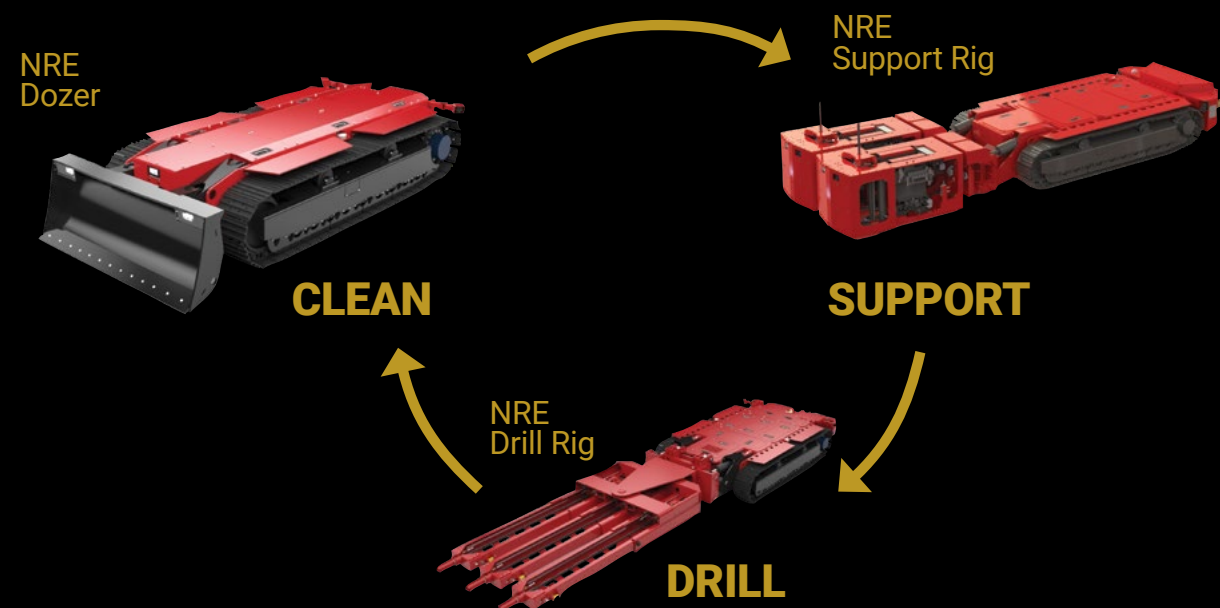
Adjustable tool
orientation : +/- 107 deg



Adjustable tool
angle: +/- 19 deg

NARROW REEF MINING MECHANISATION

The NRE Drill Rig is a key part of the new powerful electrical NRE suite of equipment which operates in stoping widths between 0.9m to 1.7m and yields improved operational performance in order to mechanise the majority of the mining activities in the cycle.



AFTER SALES

To facilitate end users effective and uninterrupted use of NRE Drill Rig, DOK-ING provides the following services.

- Training** Specialized training course for operators and technicians
- Mentoring / Supervision** Ability to provide service/personnel to facilitate day-to-day operation of NRE Drill Rig
- Maintenance** Supply of spare parts adequate stock and availability of rapidly responsive technical team worldwide



DOK-ING Ltd. general info

DOK-ING is an international market leader in humanitarian demining industry with its headquarters in Croatia, EU. We design, produce and deliver high quality and combat proven robotic systems for special purposes around the world. Experience gathered through more than 30 years of operational feedback is constantly being built into our products. We are not only the original equipment manufacturer (OEM), but also the user of our own systems.

DOK-ING also provides training by highly skilled professionals who are transferring their field knowledge through systematic and well planned training sessions.

Great knowledge, experience, innovative and purpose-made systems and technologies enable us to be customer-oriented company with flexible approach to end user requirements in order to help solving real operational and environmental problems. With a branch office and workshop in Johannesburg (South Africa), DOK-ING provides a premium service to regional customers.

DOK-ING BUSINESS

PRODUCTS

- MILITARY ENGINEERING
- EMERGENCY RESPONSE
- UNDERGROUND MINING
- COUNTER TERRORISM

DEVELOPMENT

- NEW PRODUCTS
- EXISTING PRODUCTS UPGRADE AND OPTIMISATION

SERVICES

MINE ACTION SERVICES

- MECHANICAL DEMINING AND GROUND PREPARATION
- BATTLE AREA CLEARANCE
- EXPLOSIVE ORDNANCE DISPOSAL
- MECHANICAL TECHNICAL SURVEY AND CLEARANCE

AFTER SALES SUPPORT

- SPARE PARTS DISTRIBUTION
- MAINTENANCE
- SUPERVISION
- TRAINING
- LIFE CYCLE EXTENSION

LOCAL START – GLOBAL REACH NO. OF DELIVERED SYSTEMS

- NORTH AMERICA – 145
- SOUTH AMERICA – 10
- EUROPE – 65
- ASIA – 72
- AFRICA – 59
- AUSTRALIA – 9

DOK-ING MANUFACTURES, DEVELOPS AND PROVIDES ROBOTIC SOLUTIONS FOR SPECIAL PURPOSES IN THE GLOBAL MARKET.

PRESENT IN MORE THAN **40** COUNTRIES WORLDWIDE



DOK-ING

NRE DRILL RIG TECHNICAL CHARACTERISTICS

DIMENSIONS

Prime Mover 4150 x 1976 x 745 mm

Toolset 4600 x 1995 x 790 mm

GROUND CLEARANCE

Clearance 130 mm

WEIGHT

Prime Mover 10000 kg

Toolset 4000 kg

POWER SYSTEM

Battery Type LiFePO4

Battery Pack Nominal Voltage 346 V

Working off the electrical grid
via trailing cable 380 – 550 VAC 3ph

ON BOARD FAST CHARGER

Charging time 1 h

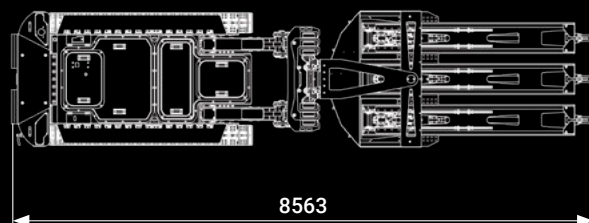
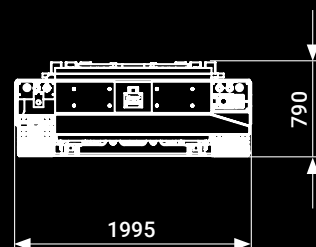
Charging source 380 – 550 VAC 3ph

DRILLING SYSTEM

Drifters type Hydraulic

Drifters power 15kW each.

Drifters per tool 3



EUROPE

DOK-ING Ltd.

Slavonska avenija 22 G, 10000 Zagreb, Croatia
T +385 1 2481 300 / F +385 1 2481 303
info@dok-ing.com / www.dok-ing.com

SOUTH AFRICA

DOK-ING Africa (Pty) Ltd.

237 Joseph Street, CNR Nywerheid, Gemiston 1401,
Johannesburg, SA
T + 27 11 822 4684 / F + 27 11 4540396
tom@doking.co.za

R&TTE Directive 1999/5/EC, EMC Directive
2004/108/EC, Low Voltage Directive 2006/95/
EC, Machinery Directive 2006/42/EC
Other references: IMAS 09.50, CWA
15044:2009, CWA 15832:2008